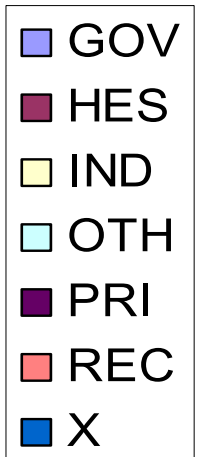
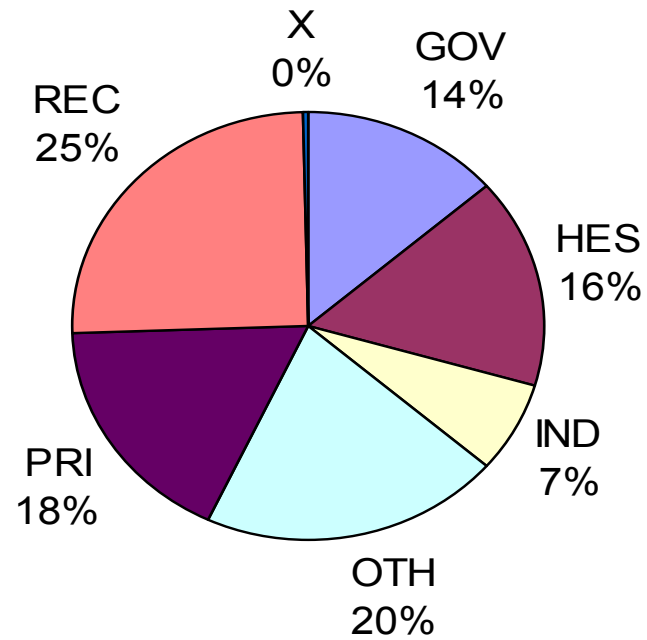


**6ο Πρόγραμμα Πλαίσιο
Θεματική Προτεραιότητα
Τεχνολογίες της Κοινωνίας της
Πληροφορίας
*Αναλυτική καταγραφή της εθνικής
συμμετοχής***

Τσιλιμπάρης Ξενοφών

EKT, 19-01-07

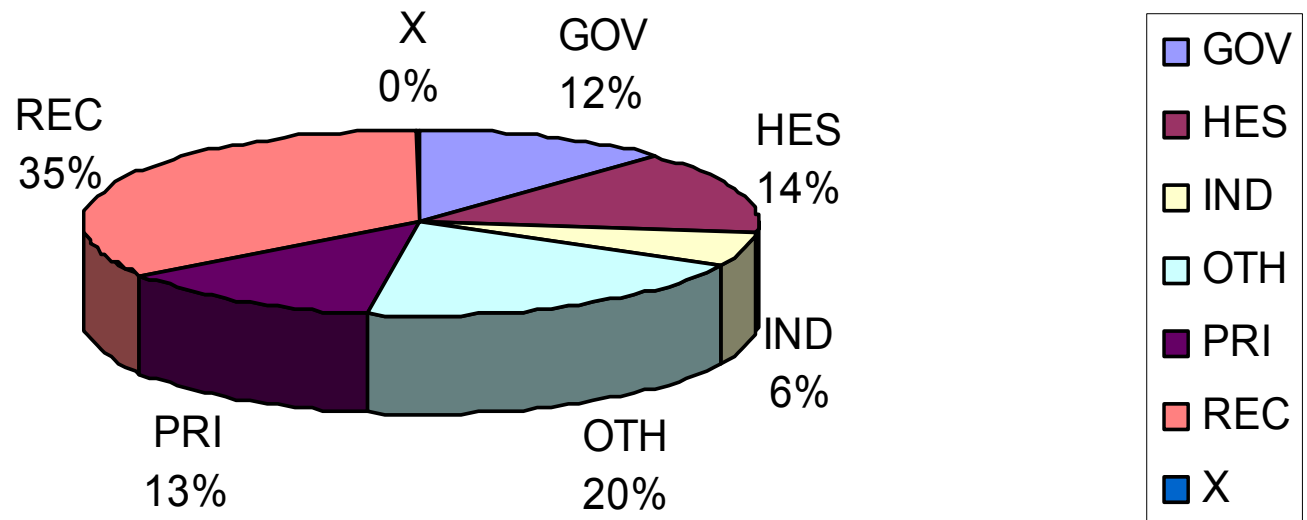
Κατανομή Συμμετοχών ανά τύπο οργανισμού (επί συνόλου 611 συμμετοχών)



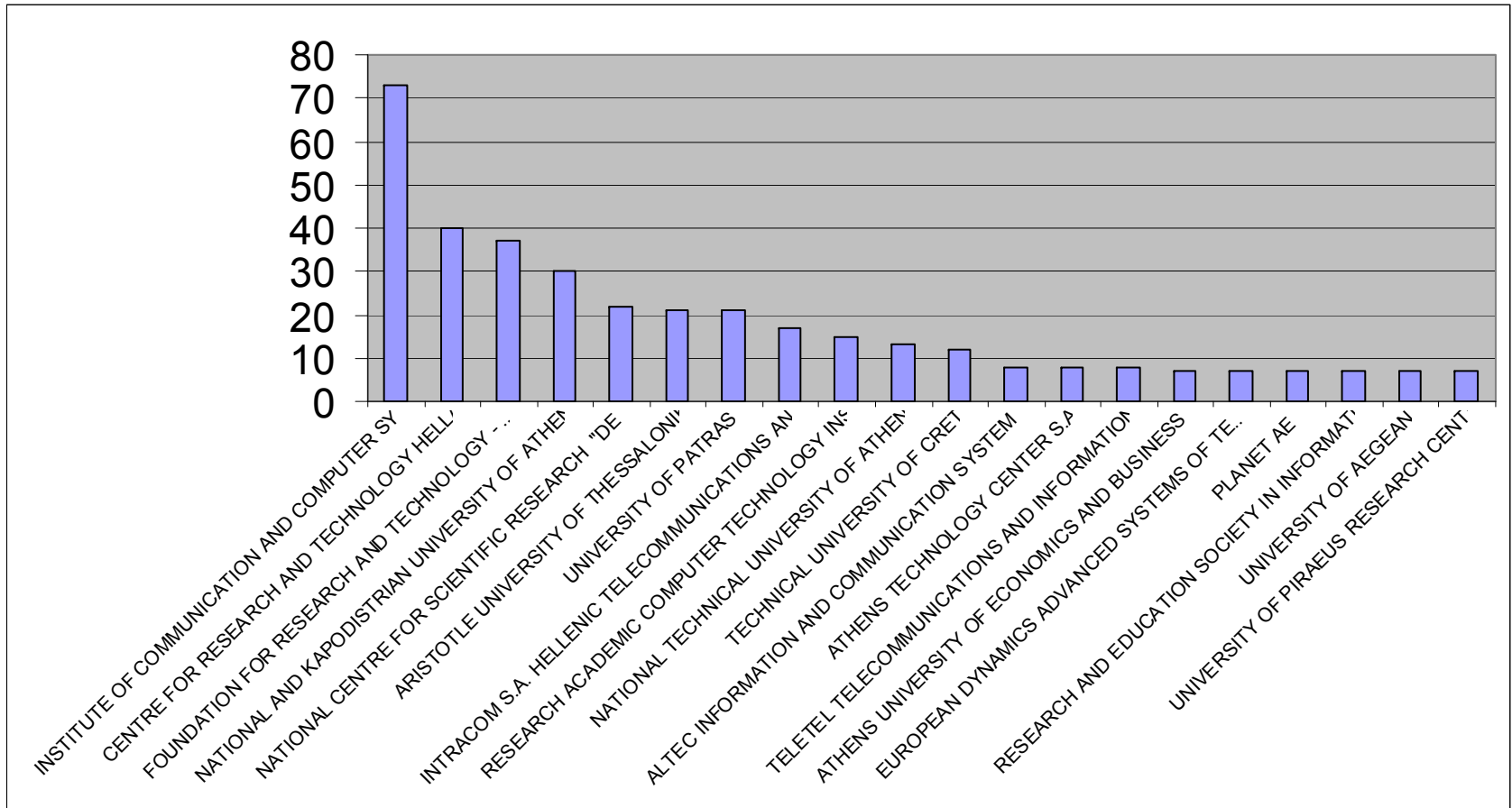
κατανομή χρηματοδότησης ανά τύπο οργανισμού

€ 141.662.485,51

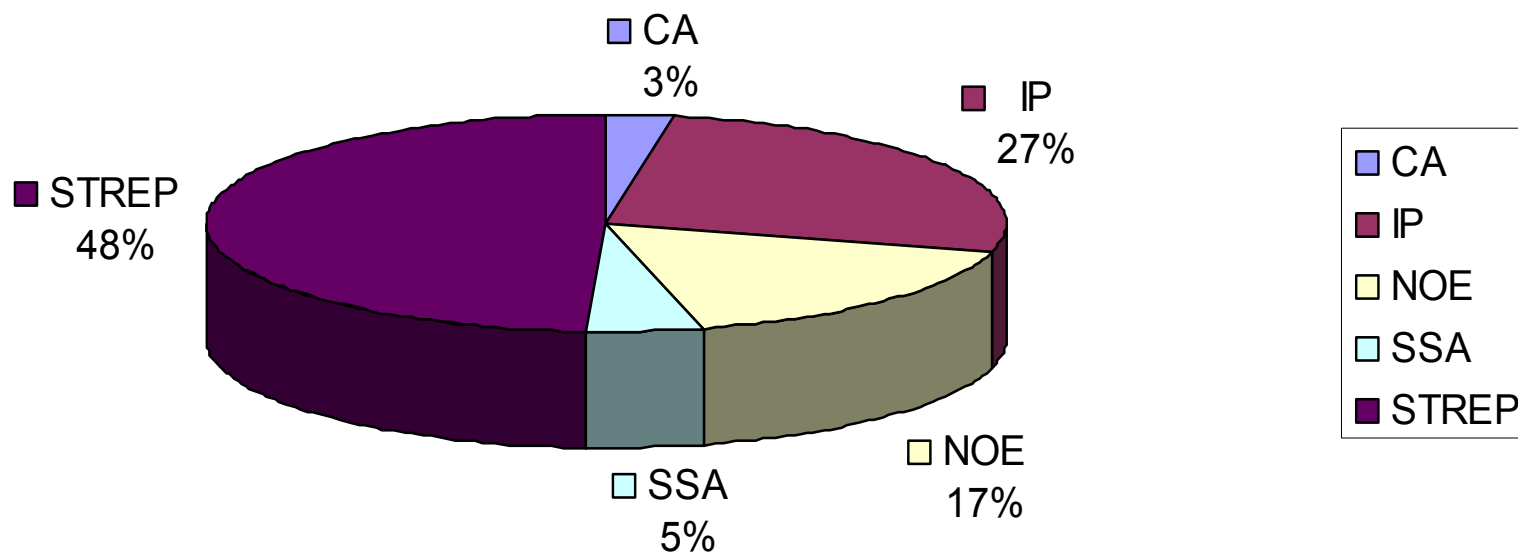
3,54%



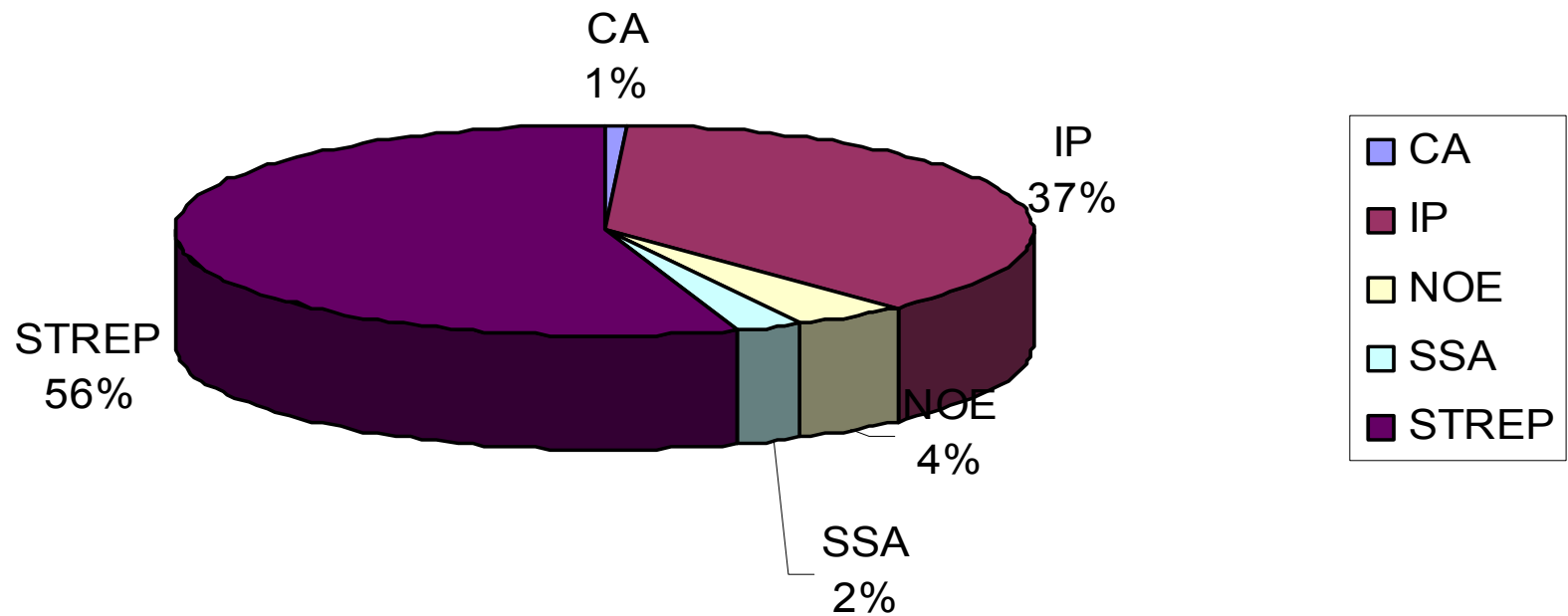
Η πρώτη 20-άδα συμμετοχών, 14 Ερευνητικά Κέντρα/ΑΕΙ και 6 εταιρείες



Κατανομή συμμετοχών ανά τύπο έργου

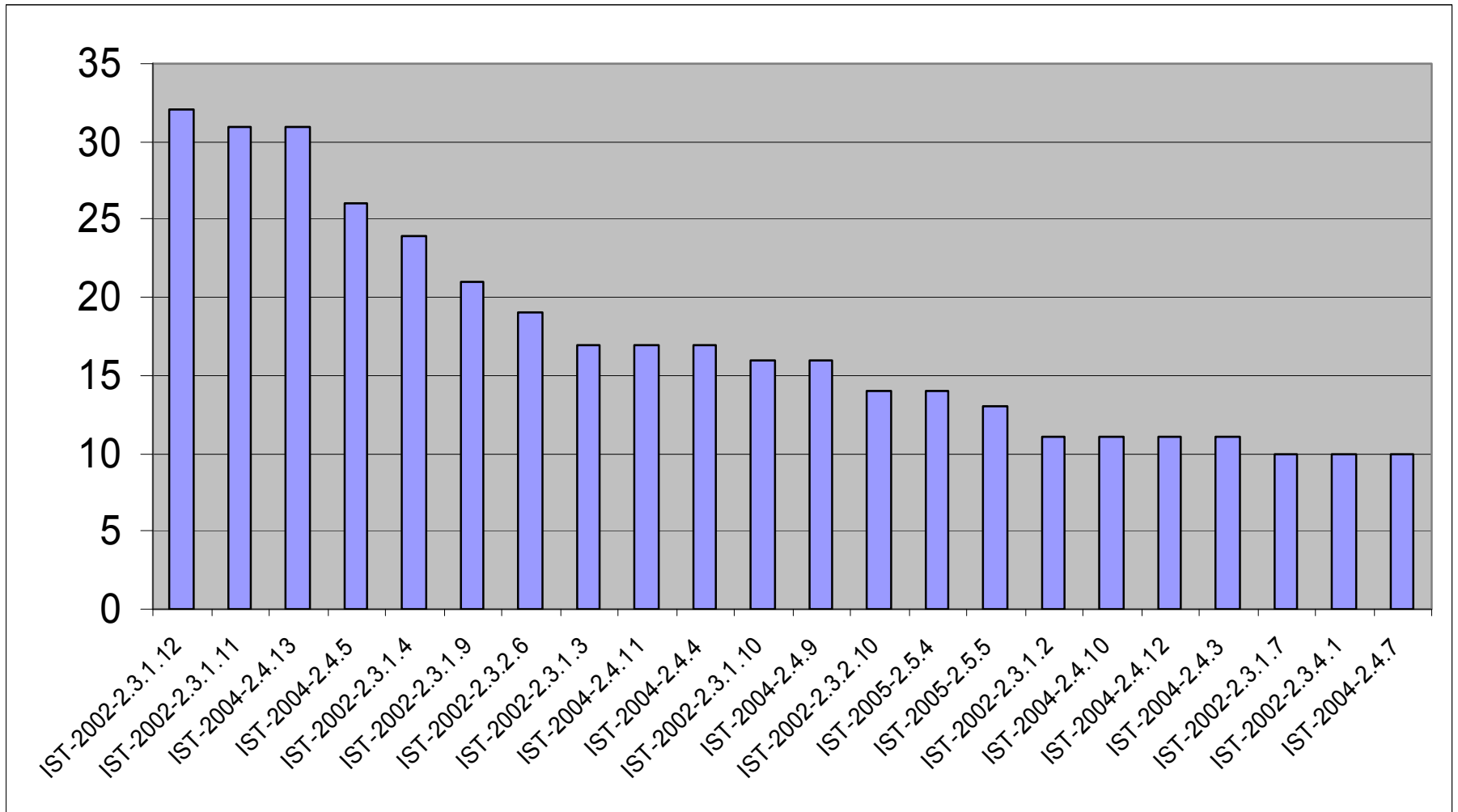


κατανομή χρηματοδότησης ανά τύπο έργου



Κατανομή συμμετοχών ανά SO

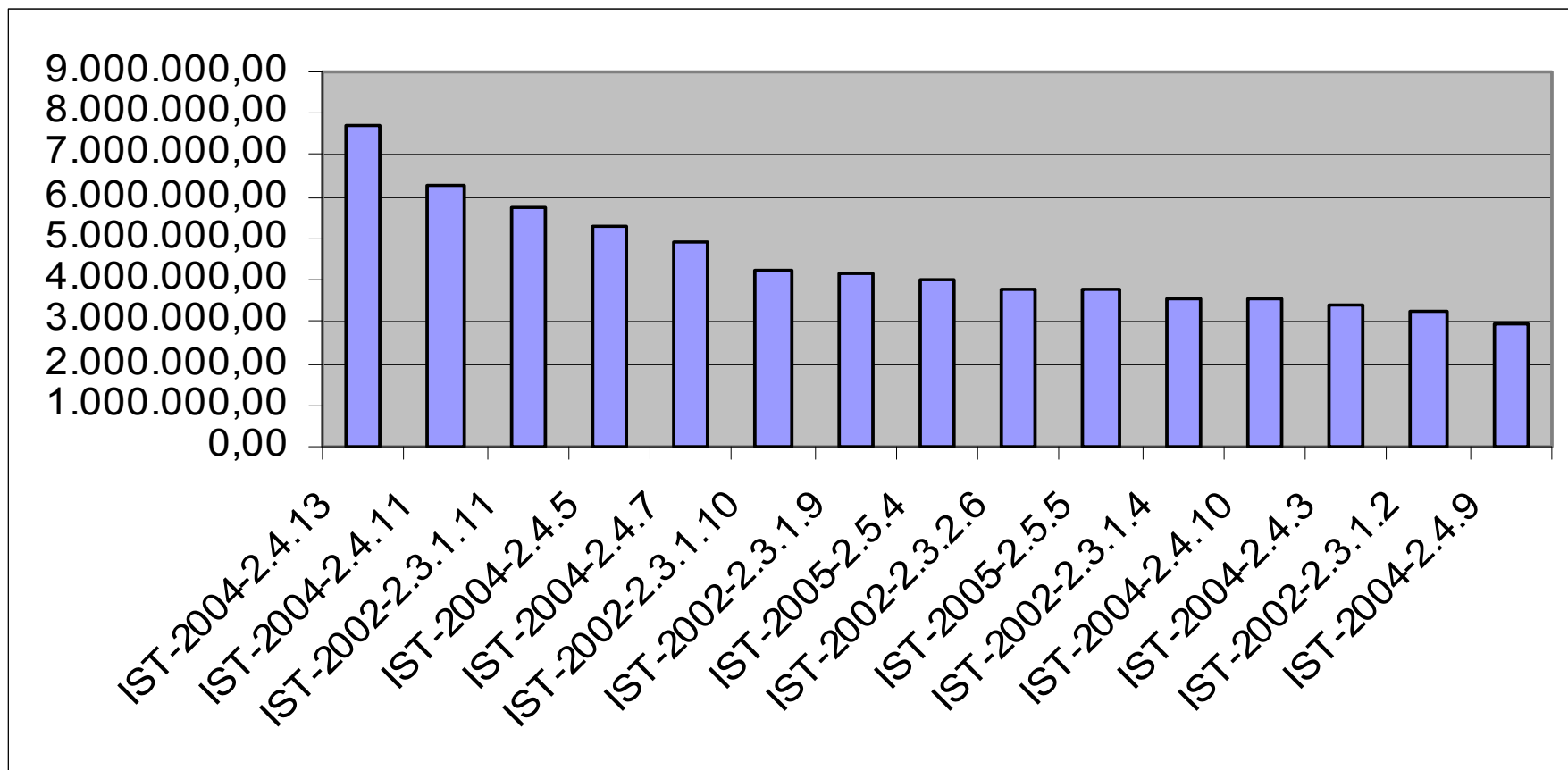
(συμμετοχές > 10, 62% του συνόλου:611 σε 22 SOs/68)



SOs Top 20

| | |
|-------------------|--|
| IST-2002-2.3.1.12 | Technology-enhanced learning and access to cultural heritage |
| IST-2002-2.3.1.11 | eHealth |
| IST-2004-2.4.13 | Strengthening the integration of the ICT research effort in an enlarged Europe |
| IST-2004-2.4.5 | Mobile and wireless systems and platforms beyond 3G |
| IST-2002-2.3.1.4 | Mobile and wireless systems beyond 3G |
| IST-2002-2.3.1.9 | Networked business and governments |
| IST-2002-2.3.2.6 | Applications and Services for the Mobile User and worker |
| IST-2002-2.3.1.3 | Broadband for all |
| IST-2004-2.4.11 | Integrated biomedical information for better health |
| IST-2004-2.4.4 | Broadband for all |
| IST-2002-2.3.1.10 | eSafety of road and air transports |
| IST-2004-2.4.9 | ICT research for innovative government |
| IST-2002-2.3.2.10 | eInclusion |
| IST-2005-2.5.4 | Advanced Grid Technologies, Systems and Services |
| IST-2005-2.5.5 | Software and Services |
| IST-2002-2.3.1.2 | Micro and nano-systems |
| IST-2004-2.4.10 | Technology-enhanced ILearning |
| IST-2004-2.4.12 | eSafety Co-operative systems for road transport |
| IST-2004-2.4.3 | Towards a global dependability and security framework |
| IST-2002-2.3.1.7 | Semantic-based knowledge systems |
| IST-2002-2.3.4.1 | FET - Open |
| IST-2004-2.4.7 | Semantic-based knowledge systems |

κατανομή χρηματοδότησης ανά SO: τα 15 πρώτα
συγκεντρώνουν το 50% της συνολικής χρηματοδότησης



50% της χρηματοδότησης σε 15 SOs

| | |
|-------------------|--|
| IST-2004-2.4.13 | Strengthening the integration of the ICT research effort in an enlarged Europe |
| IST-2004-2.4.11 | Integrated biomedical information for better health |
| IST-2002-2.3.1.11 | eHealth |
| IST-2004-2.4.5 | Mobile and wireless systems and platforms beyond 3G |
| IST-2004-2.4.7 | Semantic-based knowledge systems |
| IST-2002-2.3.1.10 | eSafety of road and air transports |
| IST-2002-2.3.1.9 | Networked business and governments |
| IST-2005-2.5.4 | Advanced Grid Technologies, Systems and Services |
| IST-2002-2.3.2.6 | Applications and Services for the Mobile User and worker |
| IST-2005-2.5.5 | Software and Services |
| IST-2002-2.3.1.4 | Mobile and wireless systems beyond 3G |
| IST-2004-2.4.10 | Technology-enhanced eLearning |
| IST-2004-2.4.3 | Towards a global dependability and security framework |
| IST-2002-2.3.1.2 | Micro and nano-systems |
| IST-2004-2.4.9 | ICT research for innovative government |

ΚΑΤΑΤΑΞΗ ΒΑΣΕΙ % ΧΡΗΜΑΤΟΔΟΤΗΣΗΣ

