

Transforming innovation into climate action



Climate-KIC is supported by the
EIT, a body of the European Union

A large crowd of people is gathered in a spacious, industrial-style hall with a high ceiling and exposed metal beams. The scene is overlaid with a semi-transparent blue filter. The text is centered over the image. The background shows people engaged in conversations, some looking at displays or posters on the walls. The overall atmosphere is one of a busy, professional event.

EIT Climate-KIC is a European **knowledge and innovation community** working to accelerate the transition to a **zero-carbon economy** through **whole systems** transformation.

EIT Climate-KIC is part of the European Institute of Innovation and Technology (EIT) and the EIT community. The EIT is a body of the European Union. We are one of six KICs acting together as global innovation leaders, delivering world class solutions to societal challenges.

EIT Climate-KIC Hub Greece



Associate Support



Government support



HELLENIC REPUBLIC
MINISTRY OF ENVIRONMENT AND ENERGY
GREEN FUND

Director, EIT Climate-KIC Hub Greece: Prof. Dr. Phoebe Koundouri

Website: www.climate-kic.org

EIT Climate-KIC Hub Greece

Mission Statement

- Mobilize global and national scientific and technological expertise to accelerate the transition to a zero-carbon economy, through CleanTech Innovation and Entrepreneurship
- Accelerate technological innovation that will address the interconnected economic, social, and environmental challenges that Greece is facing today
- Reinforce collaboration between:
 - Research & Education
 - Business, Financial Institutions & Private Funds
 - Civil Society, Policymakers & Stakeholders

Climate Change has consequences in public health of the Greek people.

70%

Of deaths in Ptolemaida are related to cancer or thromboembolic disease, related to air polluted environment.

How do we change that?

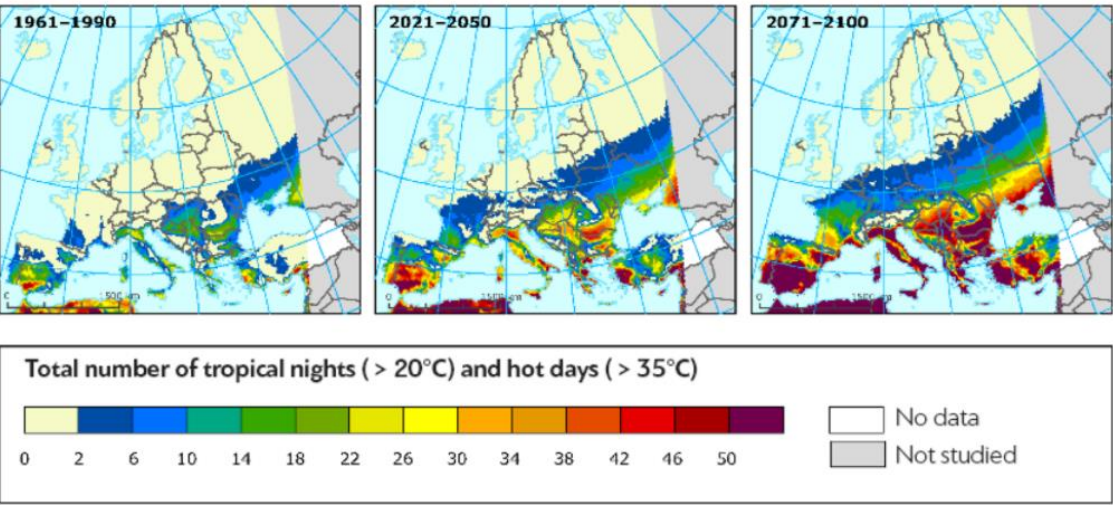
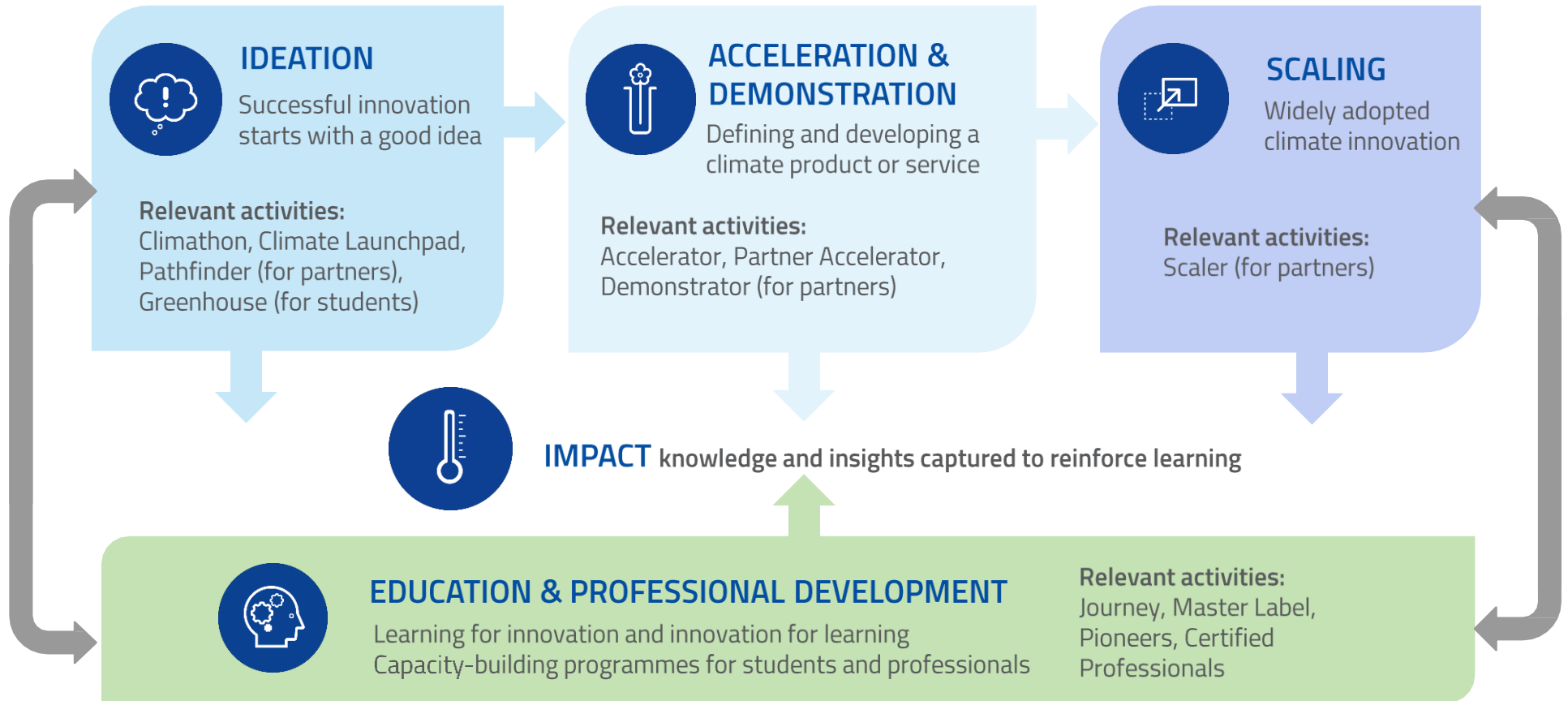


Figure 14: Number of days considered "tropical" (day and night temperature higher than 35 and 20 degrees Celsius respectively) for the periods 1961 - 1990, 2021 - 2050 and 2071 - 2100. Source: EAA (2012).

End-to-end innovation



Innovation areas

We develop innovation across sectors with the most potential for environmental gain and continued prosperity.



Urban Transitions



Sustainable
Land Use

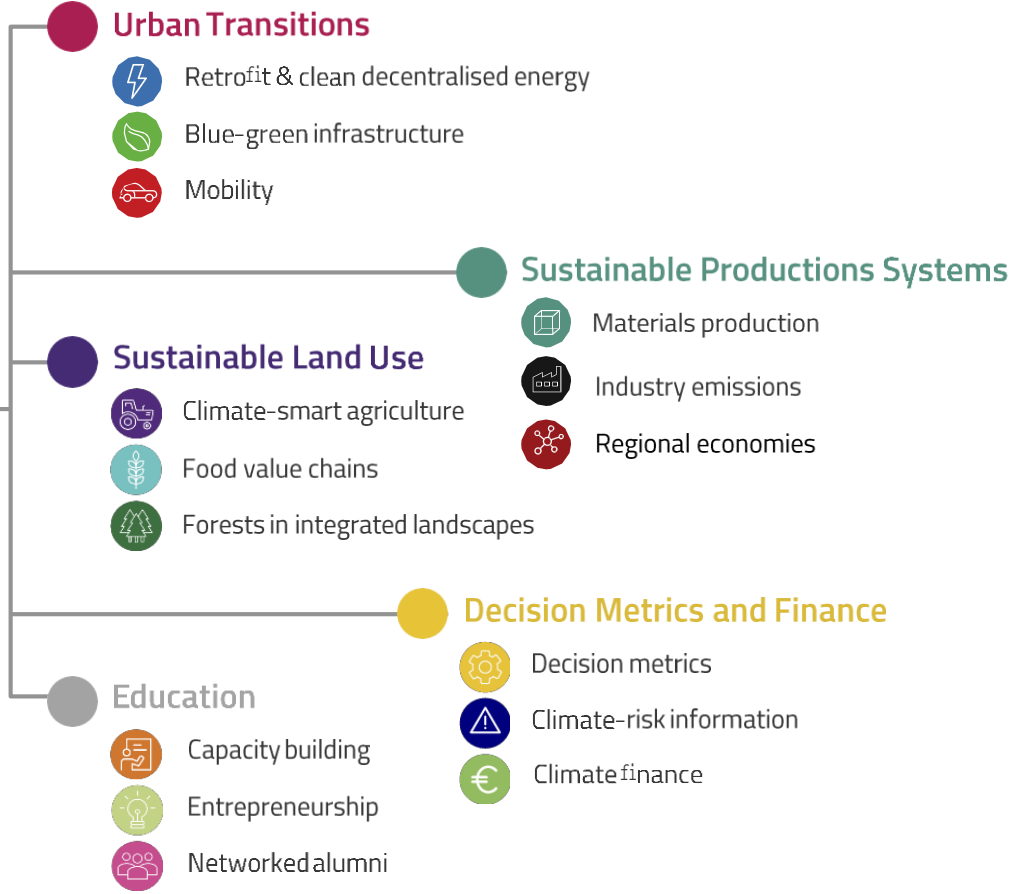


Sustainable
Production Systems

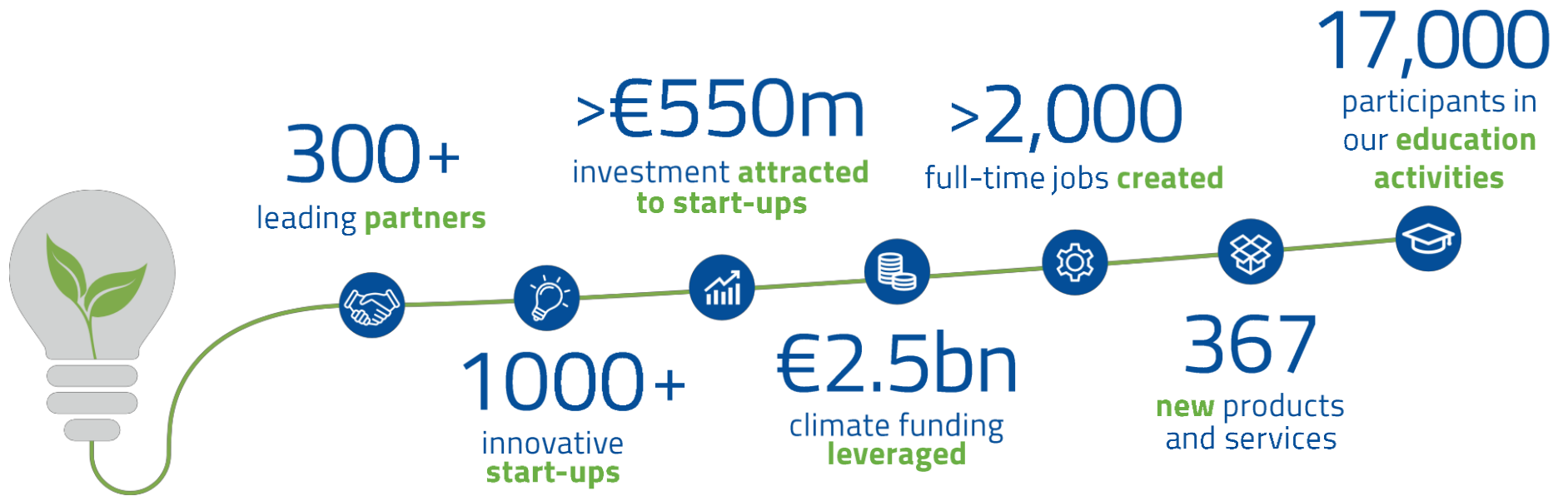


Decision Metrics and
Finance

2030 Impact Goals and Transformation Pathways



Building a movement of climate action



Our start-ups are taking off



Top six earners by investment raised

Lilium Aviation	€87M
Thermondo	€63.3M
Tado	€49.8M
Volocopter	€31.2M
Ynsect	€21M
unu	€9.1M

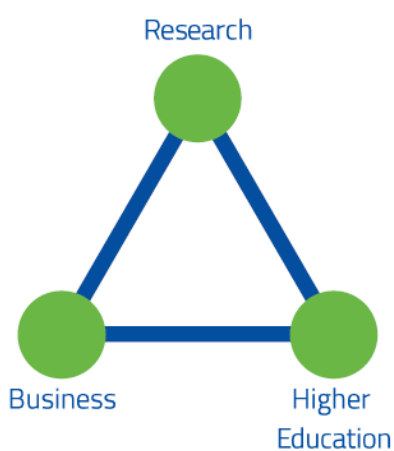
Our Partnership Community



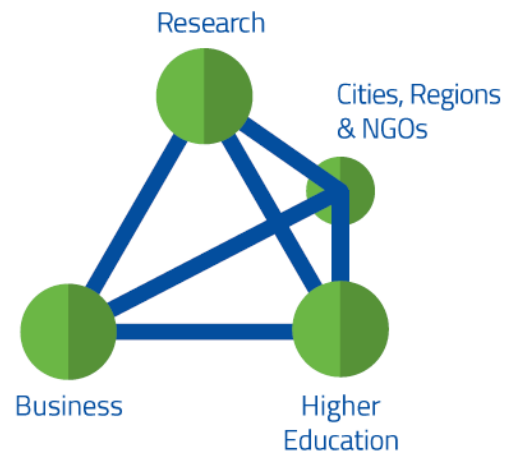
Do you think that you can combine Public Health & Climate Change?

EIT Climate KIC Hub invites anyone for collaboration on the topics of climate innovation & CleanTech

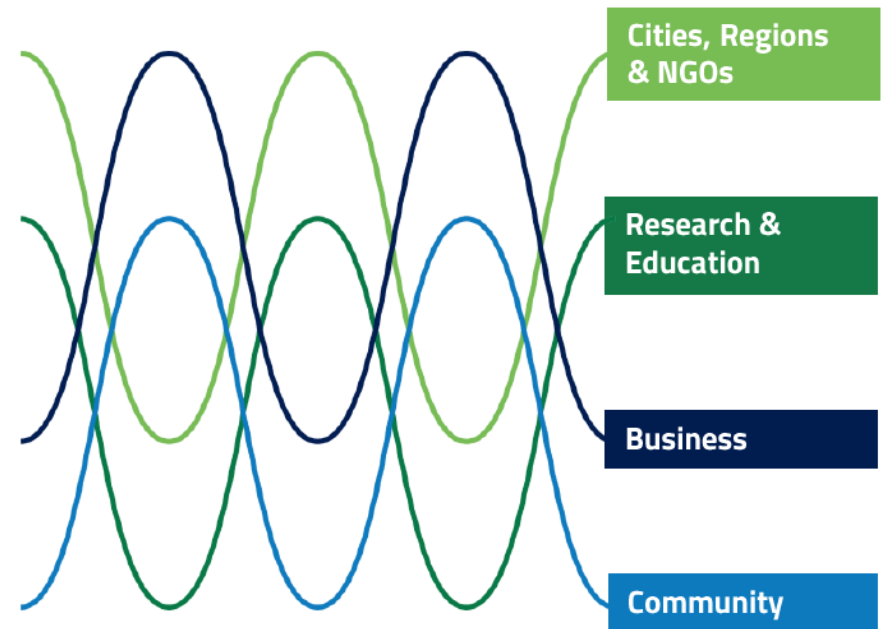
Systemic innovation through knowledge integration



Knowledge triangle



Knowledge tetrahedron



Knowledge quadruple helix



www.climate-kic.org

Contact Mail: projects@erfc.gr



Climate-KIC is supported by the EIT, a body of the European Union