



# **EIT Health -** Shaping the future of healthcare

**AWARENESS DAY**  
Athens



EIT Health is supported by the EIT,  
a body of the European Union

Péter Nagy, 18 March 2016



**The Mission: EIT Health accelerates entrepreneurship and innovation in healthy living and active ageing, providing Europe's top talents with new opportunities and resources to the benefit of all citizens.**

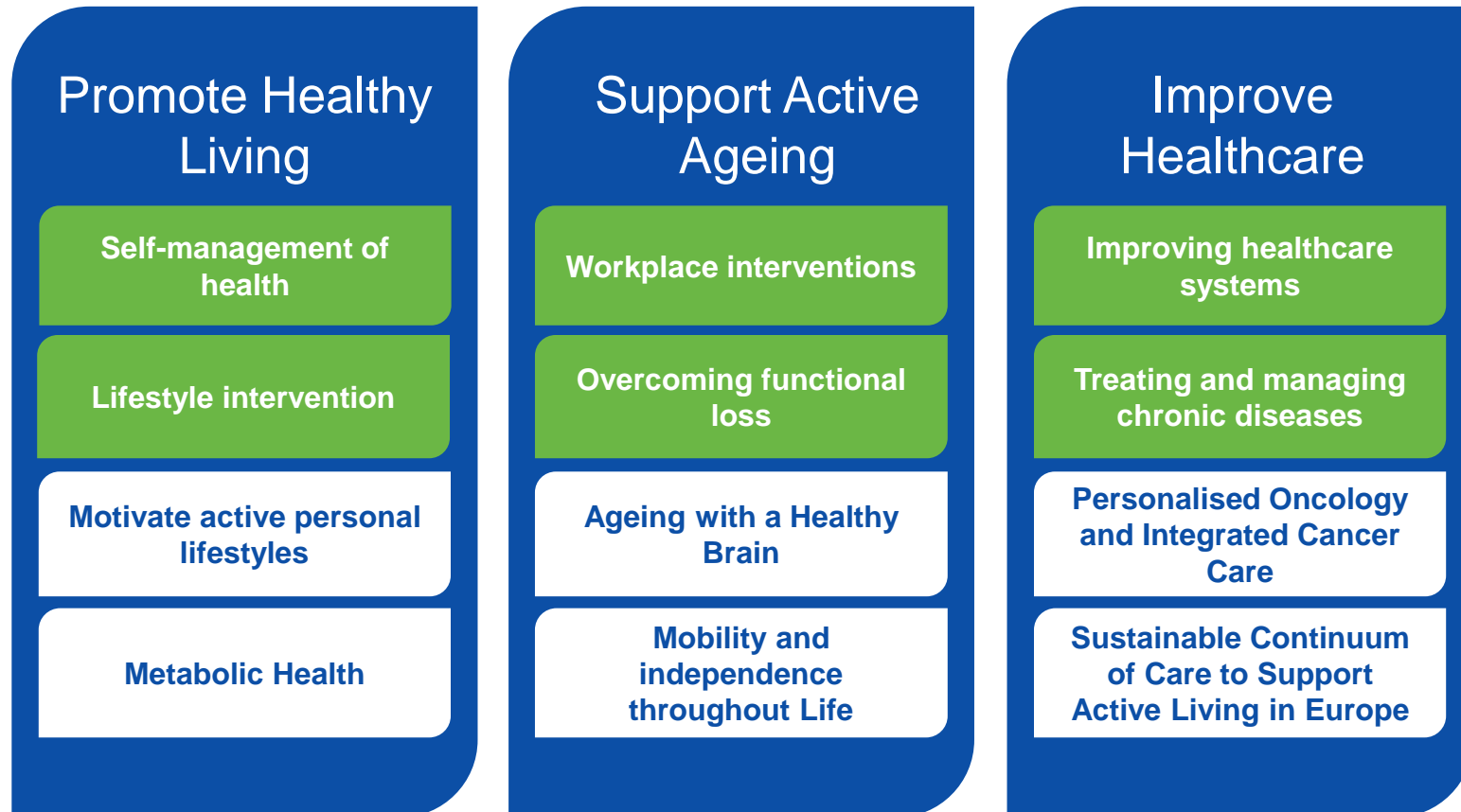
**Creating 165 start-ups and launching another 160 new services and products**

**Having 1 million students taking part in educational online programmes per year**

**Incubate approximately 340 new business ideas**

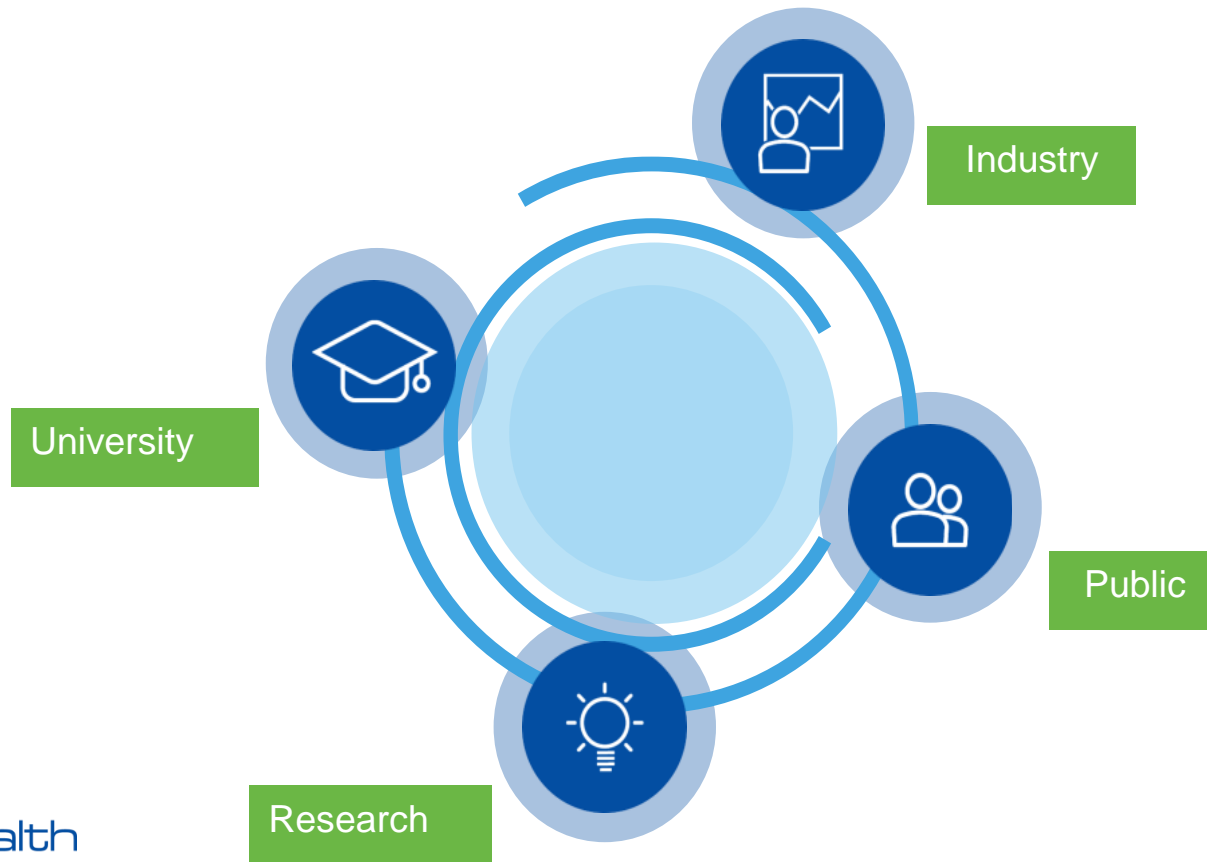
**2016-18**

# Focus areas support citizens' desire for an active and self-determined life, even at old age



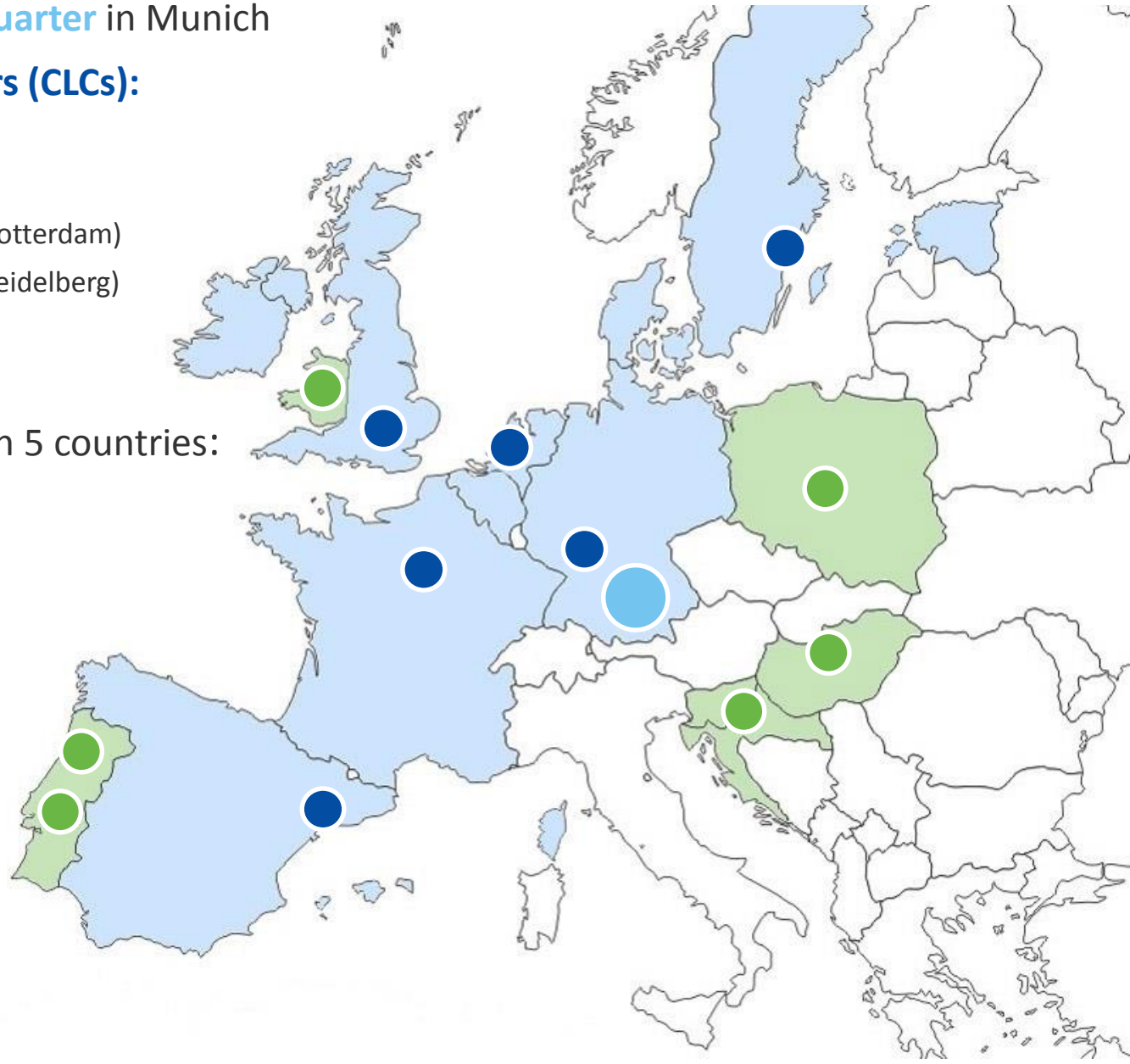
# EIT Health: leveraging the potential

One of the largest healthcare initiatives worldwide with more than **150 leading organisations**, covering all areas of healthcare.



# European reach

- **International Headquarter** in Munich
- **6 Co-Location Centers (CLCs):**
  - UK/Ireland (London)
  - Scandinavia (Stockholm)
  - Belgium/Netherlands (Rotterdam)
  - Germany (Mannheim/Heidelberg)
  - France (Paris)
  - Spain (Barcelona)
- **6 InnoStars regions** in 5 countries:
  - Croatia
  - Hungary
  - Poland
  - Portugal
  - Slovenia
  - Wales



- Co-location
- centres
- InnoStars regions
- International HQ

# Leveraging and pooling resources



Yearly membership fees for opex:

- Core partner: 75,000 EUR
- Associate partner: 25,000 EUR

# Gradual enlargement along strategic fit

formal commitment

## Campus

Individuals,  
Young talents,  
Health professionals,  
Entrepreneurs  
should try to join  
programs to improve  
entrepreneurial skills

## Accelerator

Business Plan  
Competitions in  
each CLC/InnoStars,  
Business Creation  
Services for  
companies in both  
start-up and  
expansion phase

## Projects

Participating in  
Innovation Projects  
as project partners,  
Offering  
complementary  
capabilities

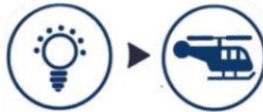
Partnership after 2018  
Recommending CLC  
Balanced membership  
Proven contribution  
Excellence  
Strategic fit

## Interested?

Contact your active colleagues if your institution is a partner  
Visit CLC meetings, EIT Health conferences, respond to open calls

# Get engaged with EIT Health activities

Innovation



Education

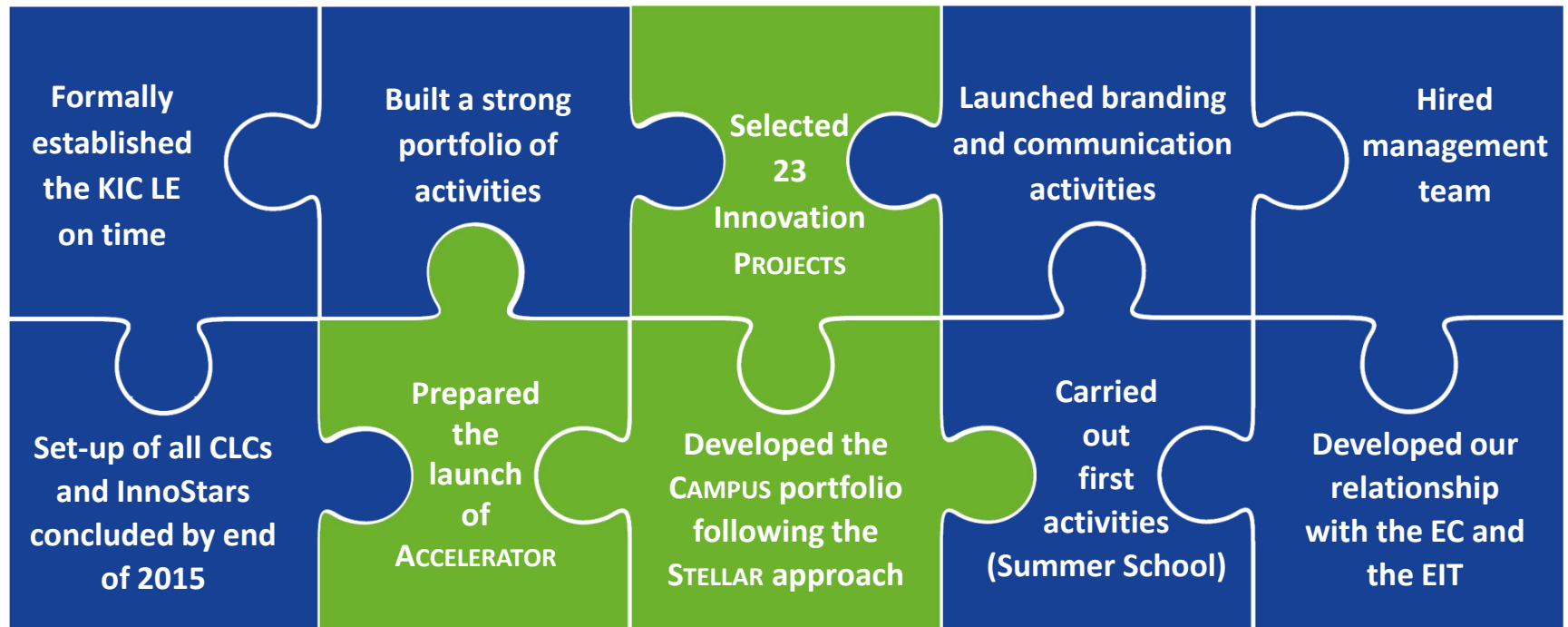


Business  
Creation

- From idea to product
- From lab to market
- From student to entrepreneur



# New KIC on the block - achievements in 2015



# Long term vision of healthy living and active aging





EIT Health is supported by the EIT,  
a body of the European Union

<https://eithealth.eu/>

Follow us



Péter Nagy – [peter.nagy@eithealth.eu](mailto:peter.nagy@eithealth.eu)