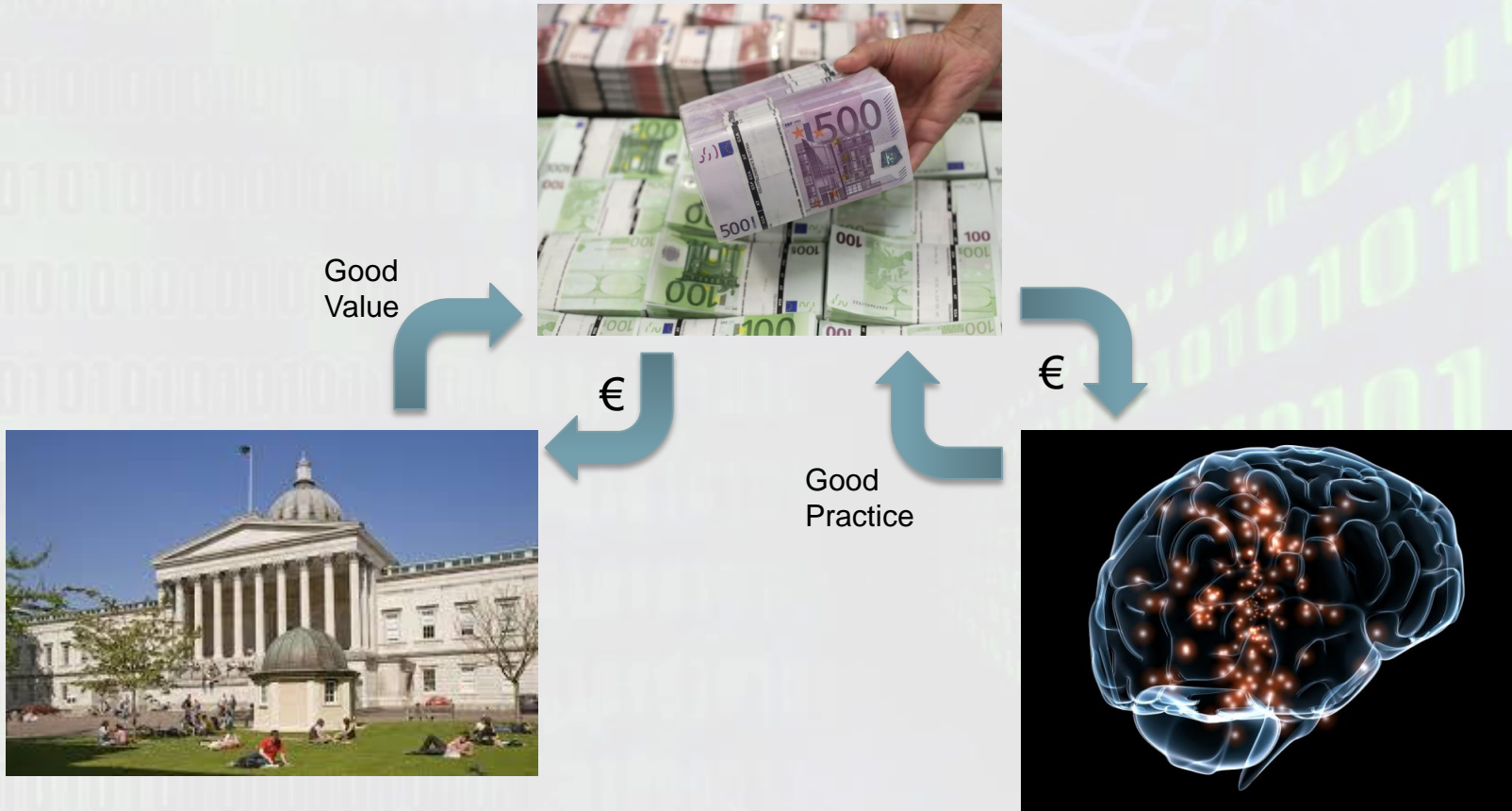


A photograph of the Portico building at UCL, a grand neoclassical structure with a large portico supported by columns and a central dome. The building is set in a courtyard with green lawns and trees. In the foreground, several people are sitting on the grass, and a bicycle is visible. The overall scene is bright and sunny.

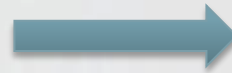
Research Data Services at London's Global University

UCL Research Data Services
RECODE Meeting 14th Jan 2015

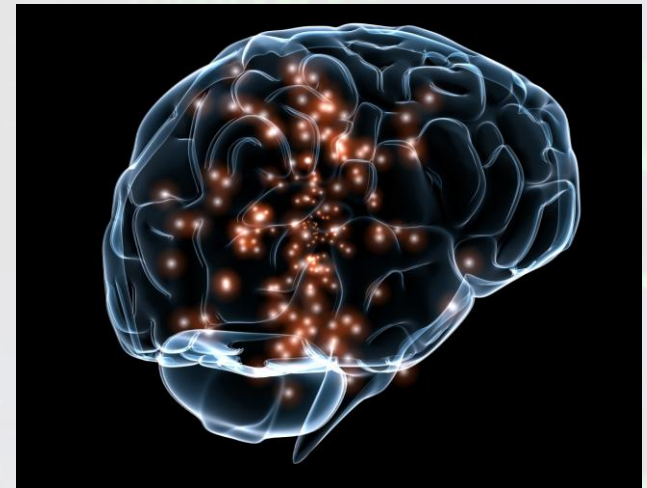




Facilities



Reputation



Public good

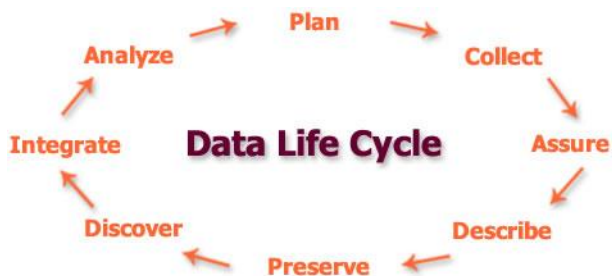
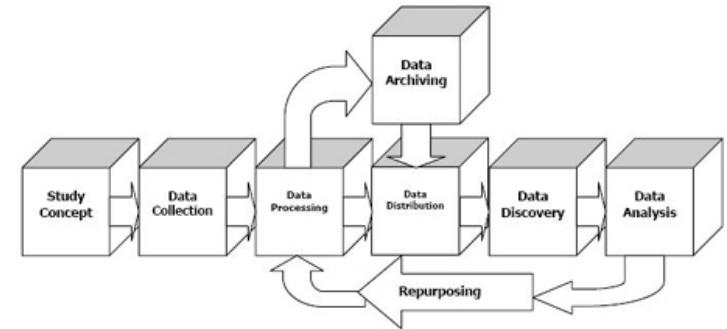
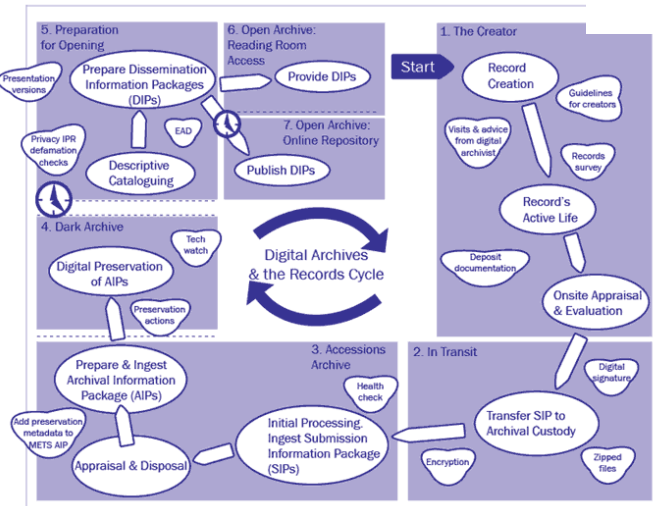
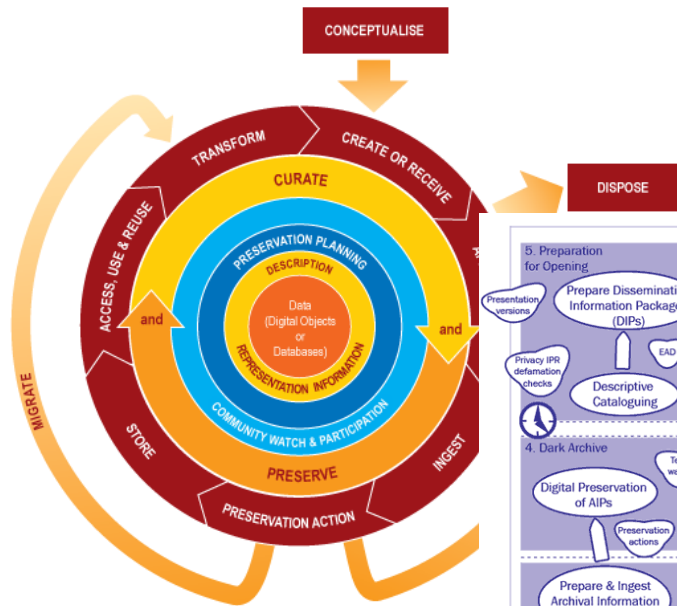


Reputation



Professional Impact

What do we mean by RDM?





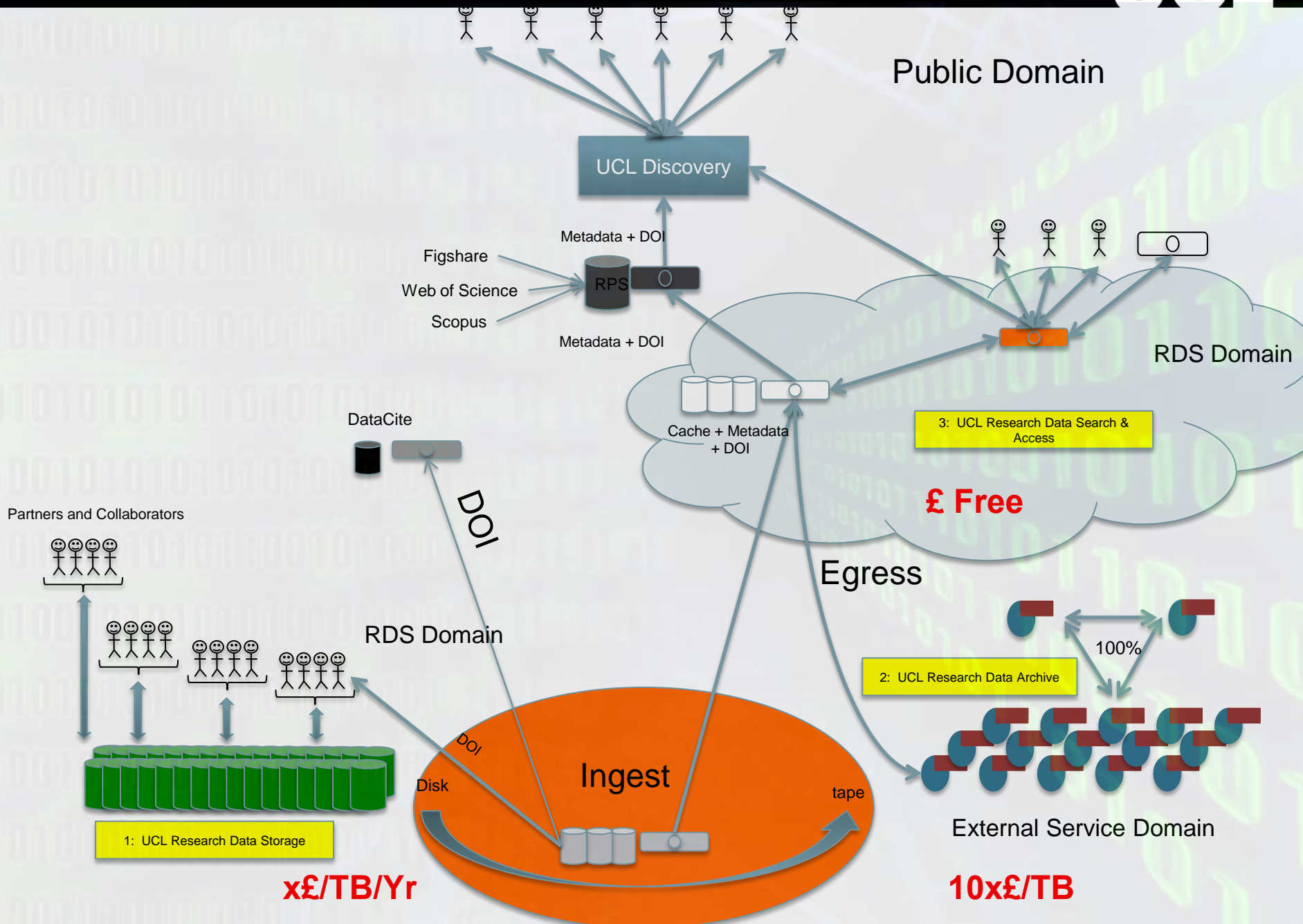
EMBL-EBI



And for Institutions?



UCL



UCL Research Data Policy

- 
- A black and white dog, possibly a spaniel, is shown in profile, looking towards the left. It is holding a carrot in its mouth.
- Responsibility
 - Compliance

- 
- A single carrot with green leafy tops is shown vertically, pointing upwards.
- Good Practice
 - Incentive

Information Services Division



UCL

UCL Research Data & Network Services

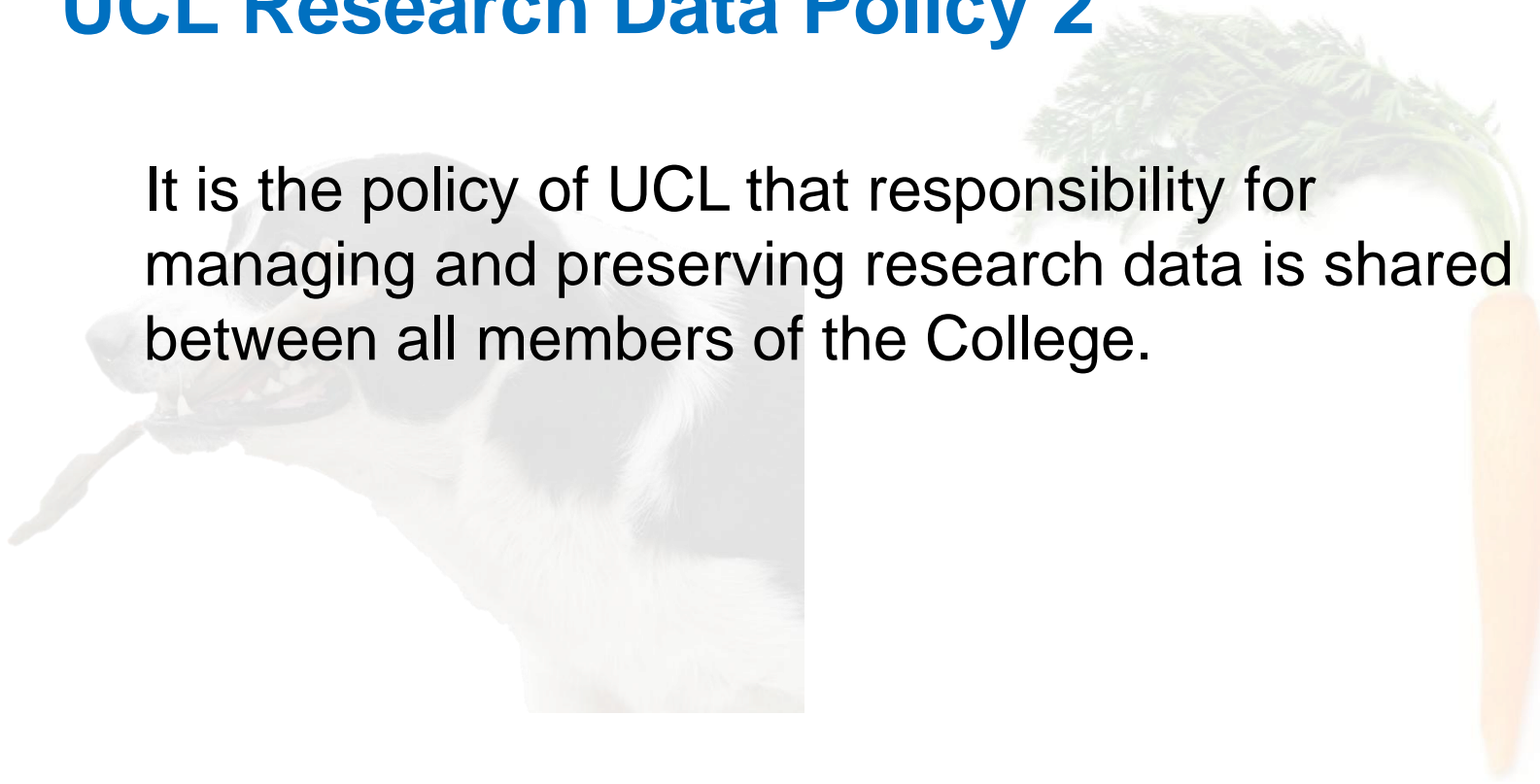
UCL Research Data Policy

UCL Research Data Policy 1

It is the policy of UCL that its members can fulfil the requirements of good research practice by enabling them to manage research data in a manner that maximises data impact and acknowledges data value as primary research output by its members.

UCL Research Data Policy 2

It is the policy of UCL that responsibility for managing and preserving research data is shared between all members of the College.



UCL Research Data Policy 3

It is the policy of UCL that following primary use (e.g. publication) or when research data is archived for long term preservation, these data will be made available in the most open manner appropriate.

Unless covered by third party contractual agreements, legislative obligations or provisions regarding ownership, UCL research data will be provided using a [Creative Commons CC0 waiver](#); supported by data citation guidelines similar to existing publishing conventions. This will ensure that re-used data are unambiguously identifiable and that appropriate credit and attribution is made.

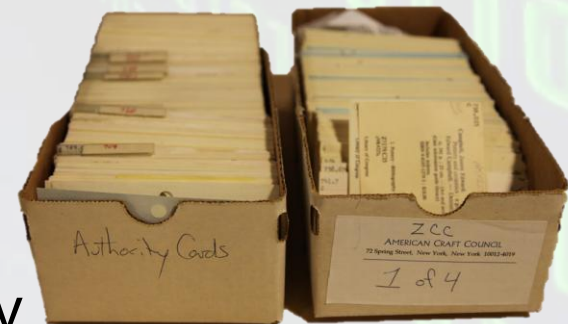
UCL Research Data Policy 4

It is the policy of UCL that clear lines of responsibility are established so that research data generated at UCL will always have an owner, responsible for preserving research data.

1st Challenge: Service provision NOT project

- Live
 - Mutable
 - Attend to critical requirement
 - Private

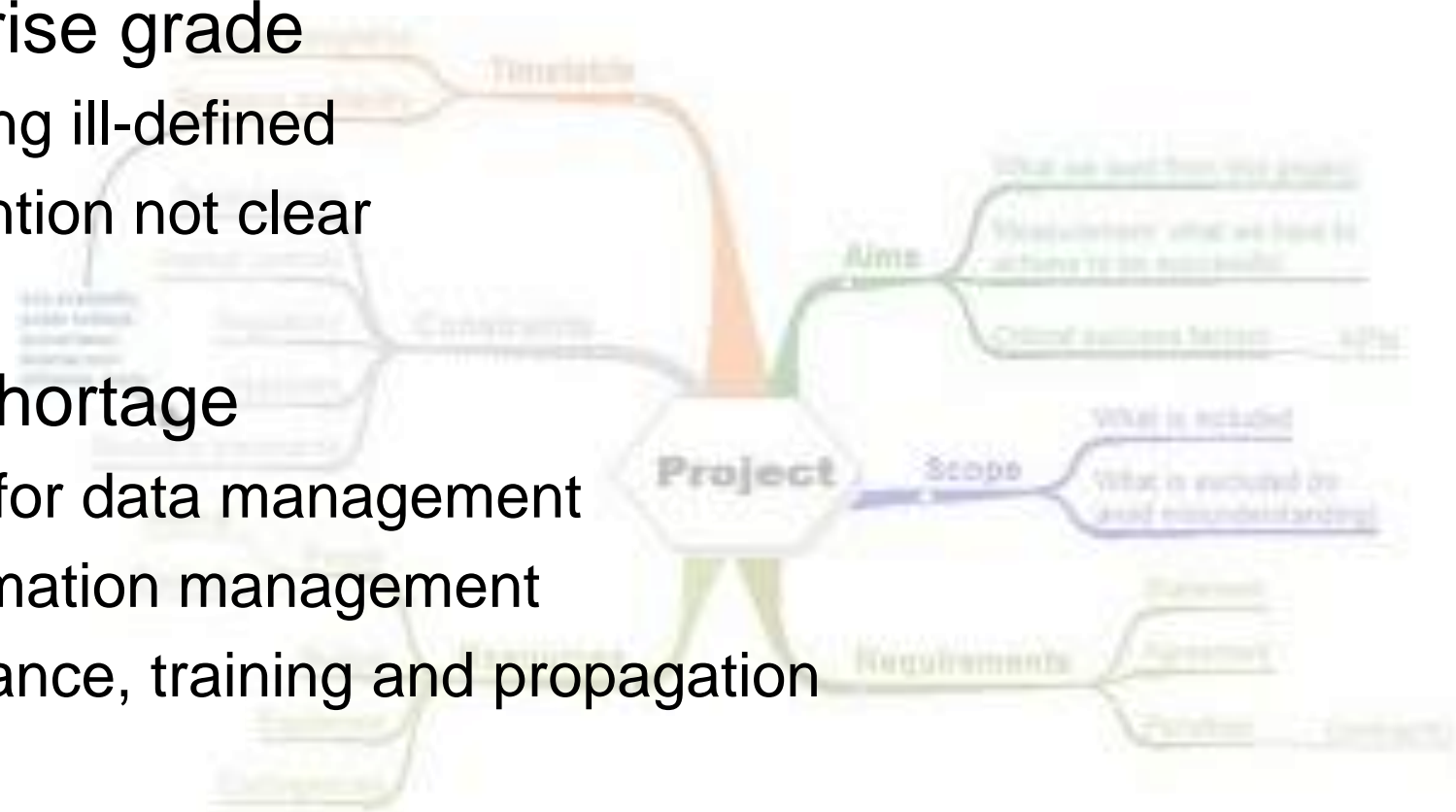
- Archive
 - Immutable
 - Exploitable
 - Extend/ Transfer of responsibility



>Challenge the convention: All my data all the time

2nd Challenge: Expensive kit / Expensive Skills

- Enterprise grade
 - Scaling ill-defined
 - Retention not clear
- Skills shortage
 - Plan for data management
 - Information management
 - Guidance, training and propagation



>Challenge: New roles and careers

3rd Challenge: Most benefit at the end

- Research Data a first class output
 - Required the equivalent of APC
- Findable and reusable
 - Requires data and information management skills
- Licensing unclear and overly complex
 - Over provisioning of licensing info
 - Over reliance on legal counsel

>Challenge: Difficult business case

The background of the slide is a faded, light-colored photograph of a grand classical building with a portico of tall, fluted columns. In the foreground, a black street lamp stands on the left, and a group of people is sitting on the steps of the building's entrance on the right.

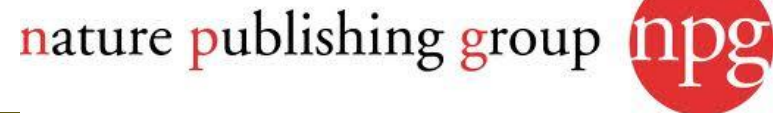
Questions?

max.wilkinson@ucl.ac.uk

Researchdata-info@ucl.ac.uk

Approach

- Removal of burden
 - From UCL researchers
 - From third party clients
- Compliance / Policy alignment
 - Publisher policy
 - Funder/government policy
 - UCL policy
- Incentive framework
 - Citable, traceable objects
 - Encouraging re-use and attribution



DataCite

Infrastructure change AND Culture change

But there is more than ONE way to do this

Goal:

- Data generated by UCL Researchers to be a first class research object
- Data represented in the same manner as publications...and 'at least' as accessible
- Data persists for the period for which is it most useful.

All carrots, no sticks

- All services are an offering
- People can and will opt out
- *Remove the burden* should be the objective
- Compliance to Research Council policy



All carrots, *hardly any sticks*

- All services are an offering
- People can and will opt out
- *Remove the burden* should be the objective
- Compliance to Research Council policy

